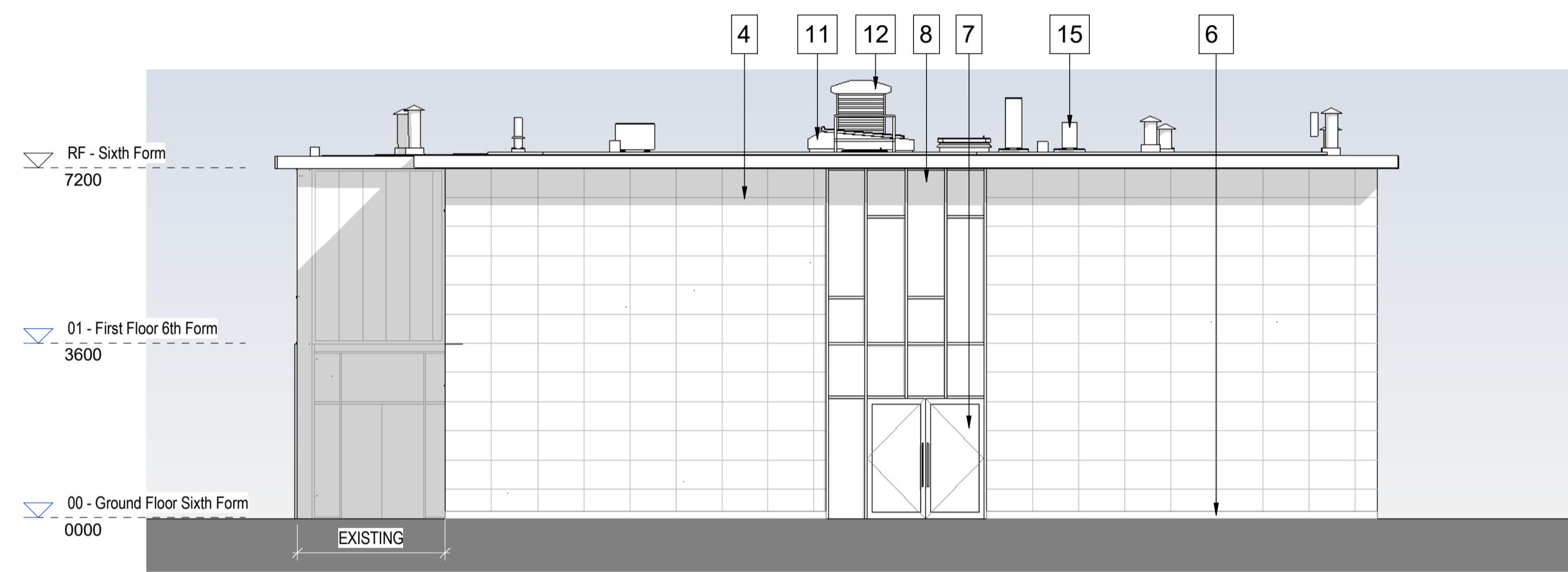
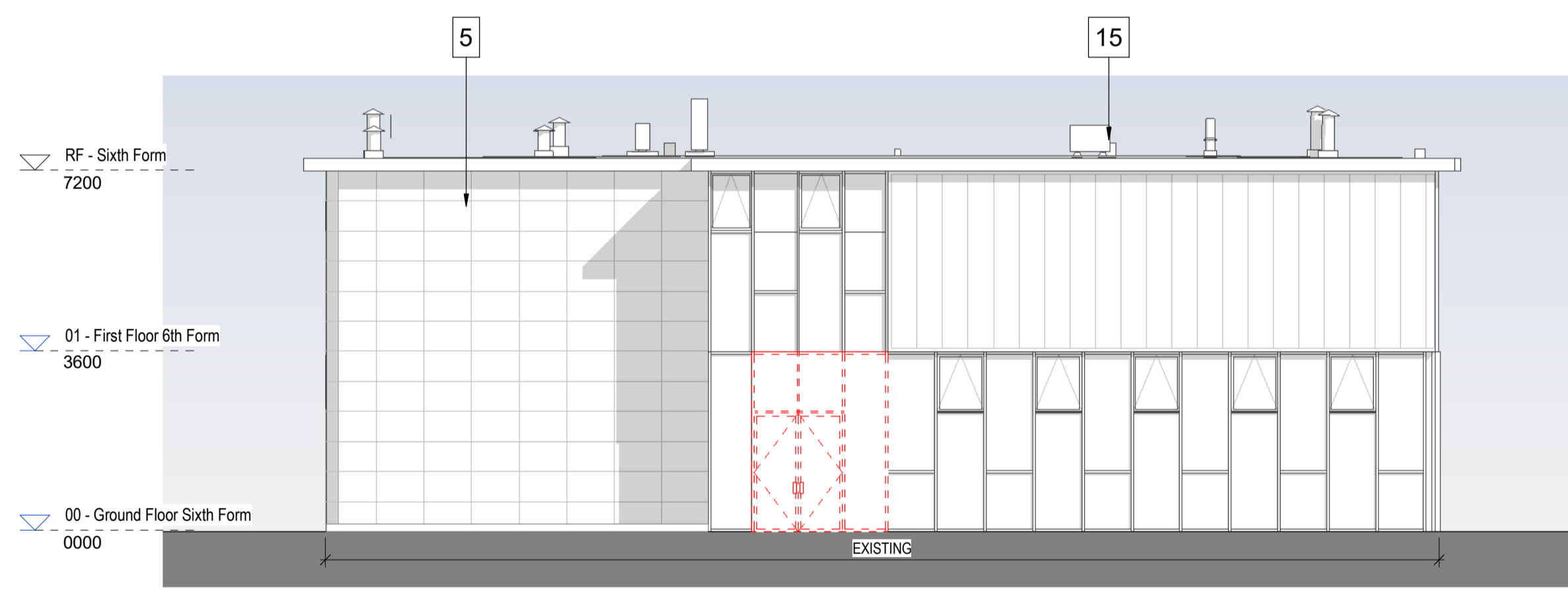


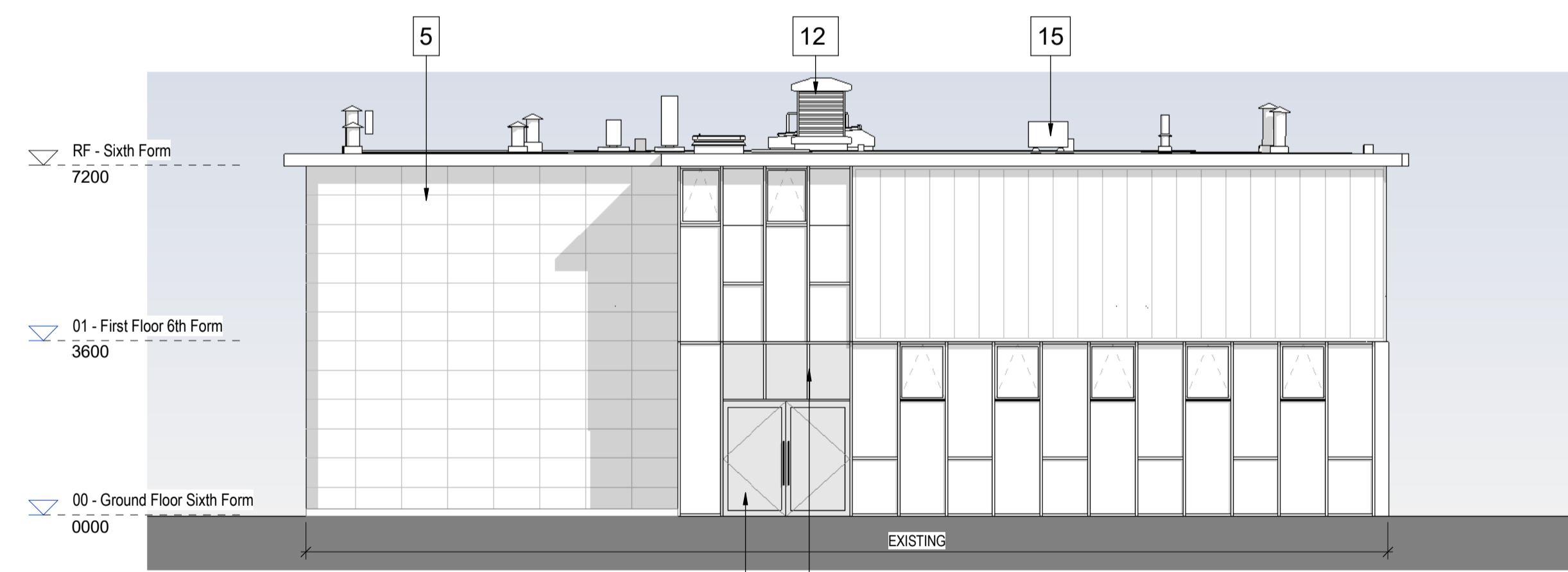
Elevation 6th Form West Existing  
Scale: 1 : 100



Elevation 6th Form West Proposed  
Scale: 1 : 100



Elevation 6th Form East Existing  
Scale: 1 : 100



Elevation 6th Form East Proposed  
Scale: 1 : 100

KEY: EXTERNAL ELEVATIONS	
1	Product: Dining Cladding Colour: Equitone Lunera Hessian or similar to complement existing brown concrete panels
2	Product: Curtain Wall with Window & Doors Colour: Dark grey
3	Product: Brise Soleil Colour: White
4	Product: 6th Form Cladding Colour: Equitone Natura - Quartz White
5	Product: Existing 6th Form Trepan Cladding Colour: White
6	Product: Plinth Colour: Dark grey to match
7	Product: Window & Door with louvre Colour: Dark grey to match existing
8	Product: Curtain Wall Colour: Dark grey
9	Product: Roof Fascia Colour: Dark grey
10	Product: Collapsible railings Colour: Galvanised

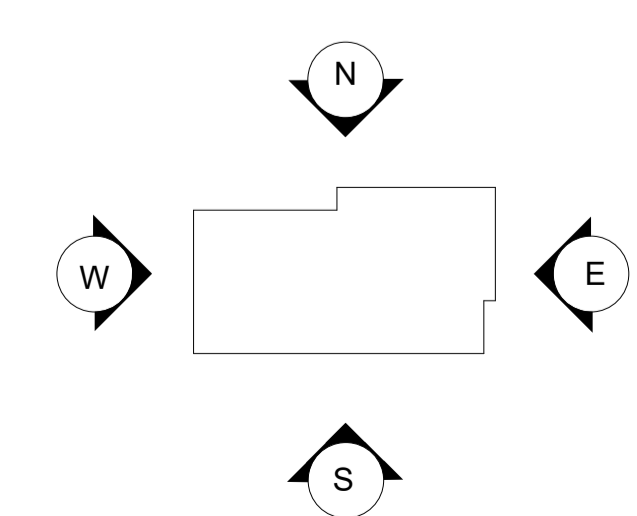
11	Product: Rooflight Colour: to match existing
12	Product: Window/door aluminium Colour: Mill finished aluminium
13	Product: Fixed Roof Access
14	Product: External Door Hoop Colour: Refer to landscape drawings
15	Product: Existing plant
16	Product: Metal canopy (with clear glazing) Colour: White
17	Product: Render finish Colour: Mid grey to match existing cladding
18	Product: Corrugated metal roof Colour: Mid grey
19	Product: Windows Colour: Dark grey
20	Product: PV Panel

NOTE: Products and colours to be equal or equivalent.

**DEMOLITION NOTES:**

- Existing elements to be demolished.
- Demolished External Walls

Refer to plans & sections also.



Elevation Legend

Project	St Crispin's School	
Title	GA ELEVATIONS (PHASE 3) 6TH FORM	
Client	Scale @ A1	Drawn
	1:100@A1	AL
	Date	Checked
	06/12/2022	KP

Notes Check all dimensions on site. Do not scale from this drawing. Report any discrepancies and omissions to HLM Architects. This Drawing is Copyright©



**CONSTRUCTION PHASE HAZARD IDENTIFICATION**  
in accordance with the Construction (Design & Management) Regulation 2015.

**CDM**

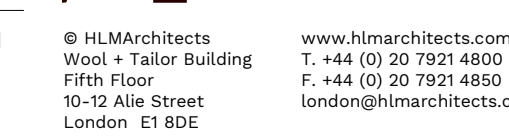
The hazard sign is a notification to other designers and contractors of foreseeable exceptional risks resulting from the design activities carried out by HLM Architects Ltd., which are beyond those reasonably expected to be identified by a competent person as defined in the Construction (Design & Management) Regulations 2015 - Regulation 9 & 10 and Industry Guidance for Designers (Section 4) published by the CDM (2015)

DRAWING REVIEWED	YES or NO	YES
EXCEPTIONAL RISKS / RISK CONTROL MEASURES		see warning triangle

Pos	PLANNING APPLICATION ISSUE	06/12/2022	AL	KP
Pos	PLANNING APPLICATION ISSUE	12/12/2022	AL	KP
Pos	STAGE ISSUE	03/01/2023	KW	AL
Pos	DRAFT ISSUE	12/01/2023	AL	KP
Pos	DRAFT ISSUE	04/02/2023	AL	KP
Rev	Description	Date	By	CHK

Revisions	S4 STAGE APPROVAL	Submittal
Drawing No.	Revision	
STC-HLM-P3-XX-DR-A-00303	P05	



© HLM Architects  
www.hlmarchitects.com  
Wool + Tallor Building  
Fifth Floor  
10-12 Aisle Street  
London E1 8DE  
T. +44 (0) 20 7921 4800  
F. +44 (0) 20 7921 4850  
london@hlmarchitects.com

This page is intentionally left blank